

SENGA NENGUDI



Installation view, west and north wall
Performances 1976 - 81
January 17 - February 23, 2013
Thomas Erben Gallery

SENGA NENGUDI



Installation view toward west wall
Performances 1976 - 81
January 17 – February 23, 2013
Thomas Erben Gallery

SENGA NENGUDI



Installation view, east and south wall
Performances 1976 - 81
January 17 - February 23, 2013
Thomas Erben Gallery

SENGA NENGUDI



Performance Piece (1978)

Silver gelatin print, edition of 5 (+1 AP)

Triptych, each 31.5 x 40 in

Photographer: Harmon Outlaw

Institutional collections: Centre Pompidou, Paris; The Studio Museum in Harlem, New York

SENGA NENGUDI



Study for Mesh Mirage (1977)
Silver gelatin print, edition of 5 (+1 AP)
40 x 30 in
Photographer: Adam Avila

SENGA NENGUDI



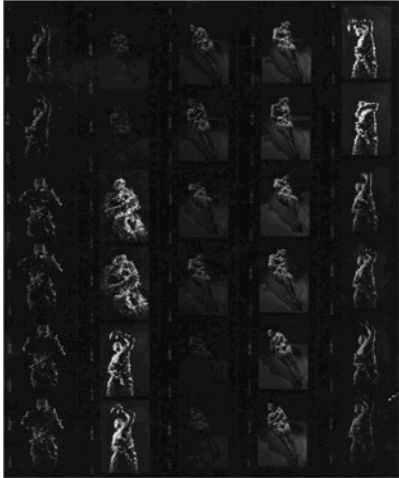
Studio performance with R.S.V.P. (1976)
Silver gelatin print, edition of 5 (+1 AP)
30 x 40 in
Photographer: Ken Peterson

SENGA NENGUDI



Performance with "Inside/Outside Winter 1977" (1977)
Silver gelatin print, edition of 5 (+1 AP)
40 x 30 in
Photographer: Ken Peterson

SENGA NENGUDI



Masked Taping (1978-79)
Silver gelatin print, edition of 5 (+1 AP)
Triptych, each 40 x 33; 40 x 27; and 40 x 27 inches respectively
Photographer: Adam Avila

SENGA NENGUDI



Freeway Fets (1978)
C- print, edition of 5 (+1 AP)
Series of 11 prints, each 12 x 18 inches
Photographer: Quaku / Roderick Young

SENGA NENGUDI



Freeway Fets (1978)
C- print, edition of 5 (+1 AP)
From series of 11 prints, 12 x 18 inches
Photographer: Quaku / Roderick Young

SENGA NENGUDI



Freeway Fets (1978)

C- print, edition of 5 (+1 AP)

From series of 11 prints, 12 x 18 inches

Photographer: Quaku / Roderick Young

SENGA NENGUDI



Freeway Fets (1978)
C- print, edition of 5 (+1 AP)
From series of 11 prints, 12 x 18 inches
Photographer: Quaku / Roderick Young

SENGA NENGUDI



Performance with "Inside/Outside Winter 1977" (1977)
Silver gelatin print, edition of 5 (+1 AP)
40 x 30 in
Photographer: Ken Peterson

SENGA NENGUDI



Rapunzel (1981)
Silver gelatin print, edition of 5 (+1 AP)
40 x 30 in
Photographer: Barbara McCullough