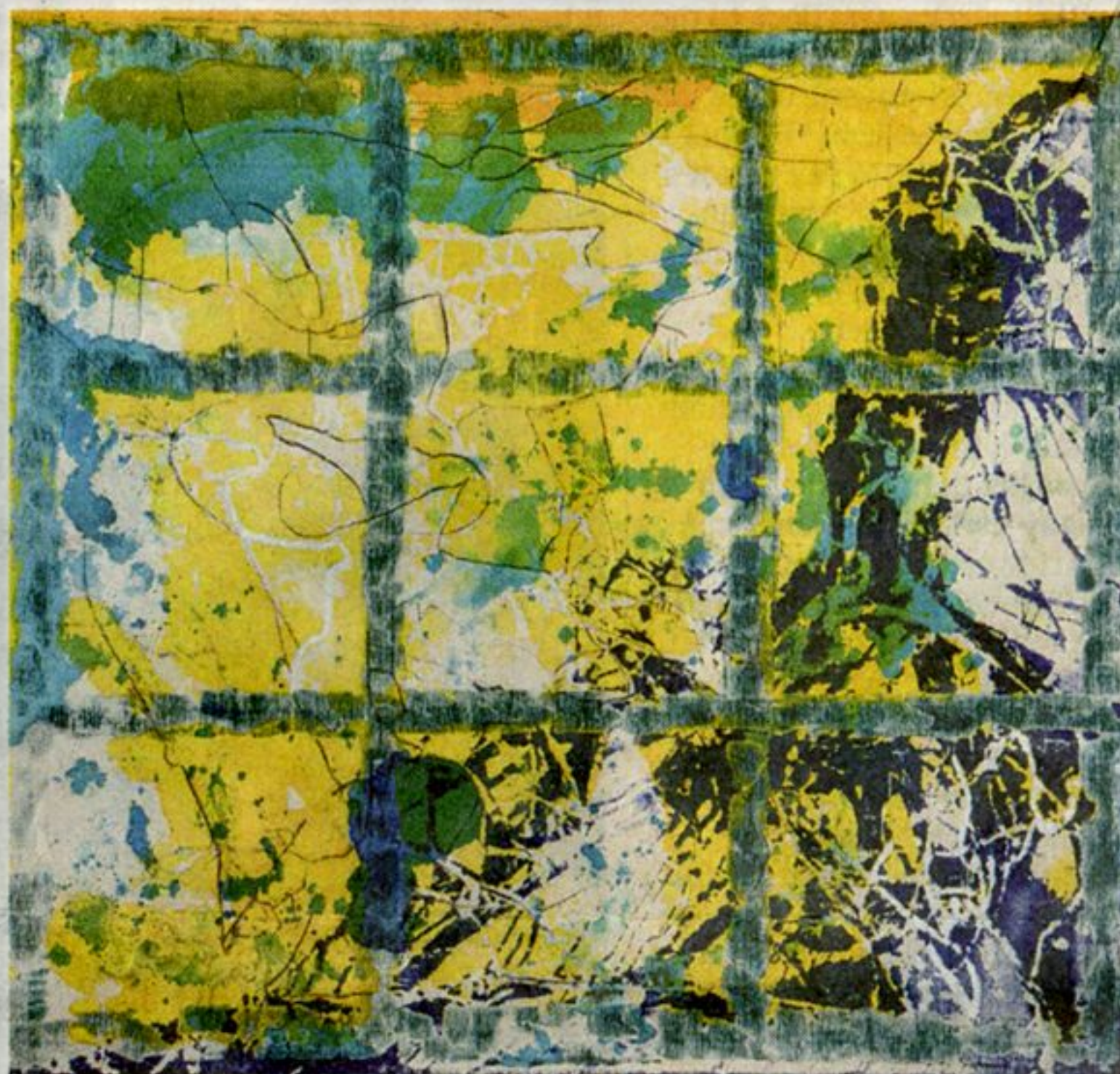


## State Of Our Art, According To Whitney

By CAROL VOGEL



COLLECTION OF THE ARTIST; COURTESY OF THE ARTIST AND THOMAS ERBEN GALLERY, NEW YORK

“Okie Dokie,” 2008, dyed cheesecloth and acrylic on canvas, by Dona Nelson, who lives and works in Pennsylvania and New York.

### Female Painters

**W**OMEN are revitalizing abstract painting, and they are well represented here, with works by artists like Louise Fishman, Jacqueline Humphries, Molly Zuckerman-Hartung, Dona Nelson, Laura Owens and Amy Sillman.

“I am focusing on a handful of women artists who take on the authority of abstract painting — its history, its ambition and its rela-

tionship to power and gender,” Ms. Grabner said. “I wanted to put them together to underscore how different the language of abstract painting can be.”

She isn’t alone; Mr. Elms has included two large-scale abstract paintings by Rebecca Morris on the second floor. Long a fan of Marcel Breuer’s Brutalist architecture, Mr. Elms said the works fit perfectly with the space.