

Thomas Erben Gallery

Dona Nelson

models stand close to the paintings

March 23 – May 6, 2017

Thomas Erben Gallery



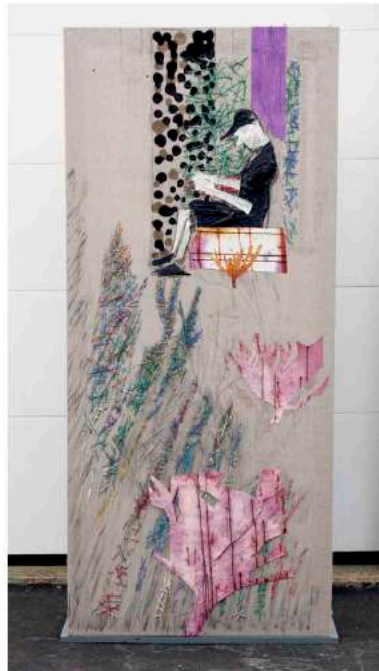
Installation view: west and south wall

Thomas Erben Gallery



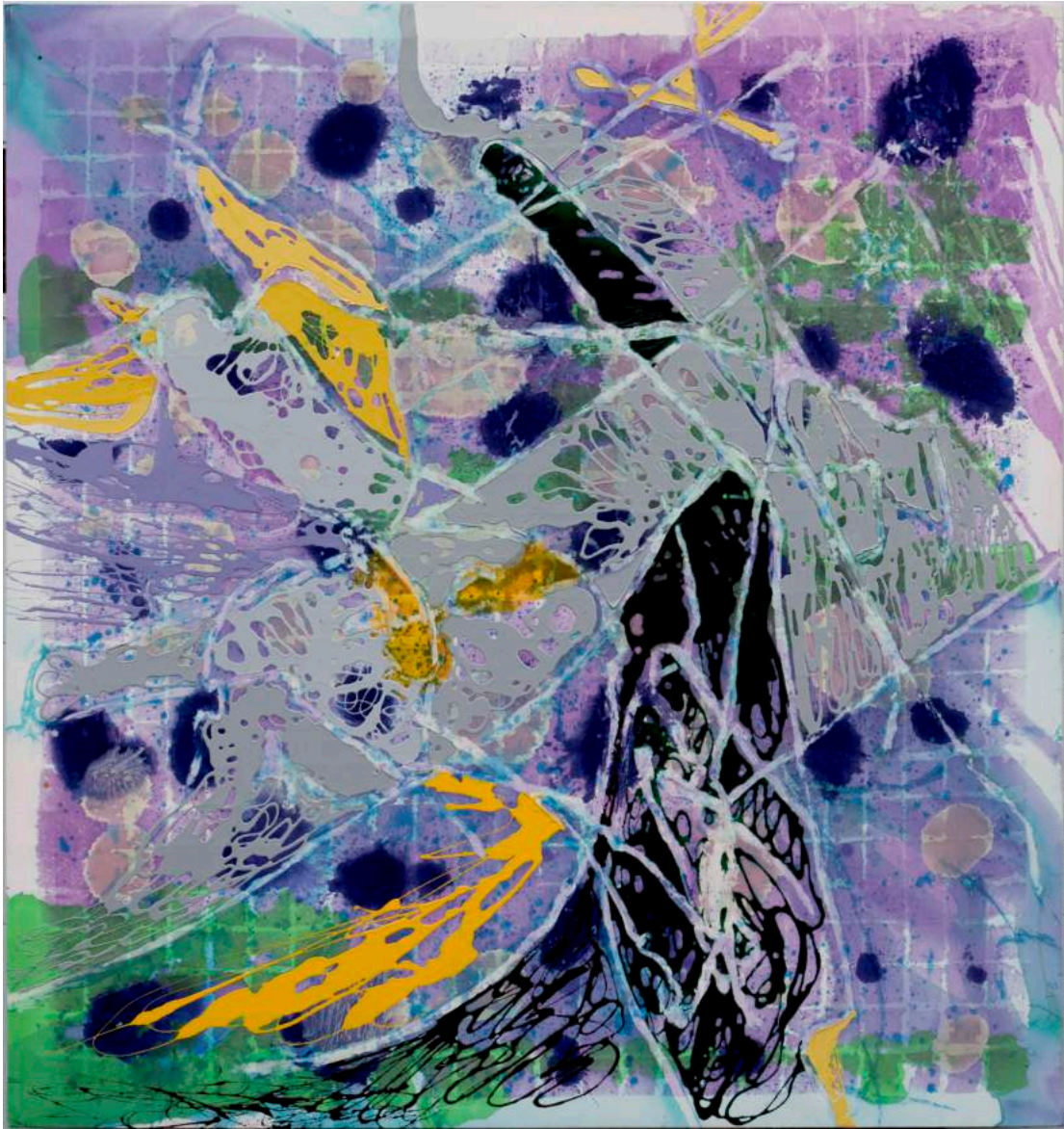
Platform, 2017
Collage, dyed cheesecloth,
muslin, and acrylic mediums
on linen mounted on
plywood base
panel: 81.5 x 36 in.
base: 74 x 22 in.

Thomas Erben Gallery



By the Yard, 2016
Collage, dyed cheesecloth,
muslin, acrylic mediums on
linen panel mounted on
plywood base
panel: 81.5 x 36 in.
base: 38 x 32 in

Thomas Erben Gallery



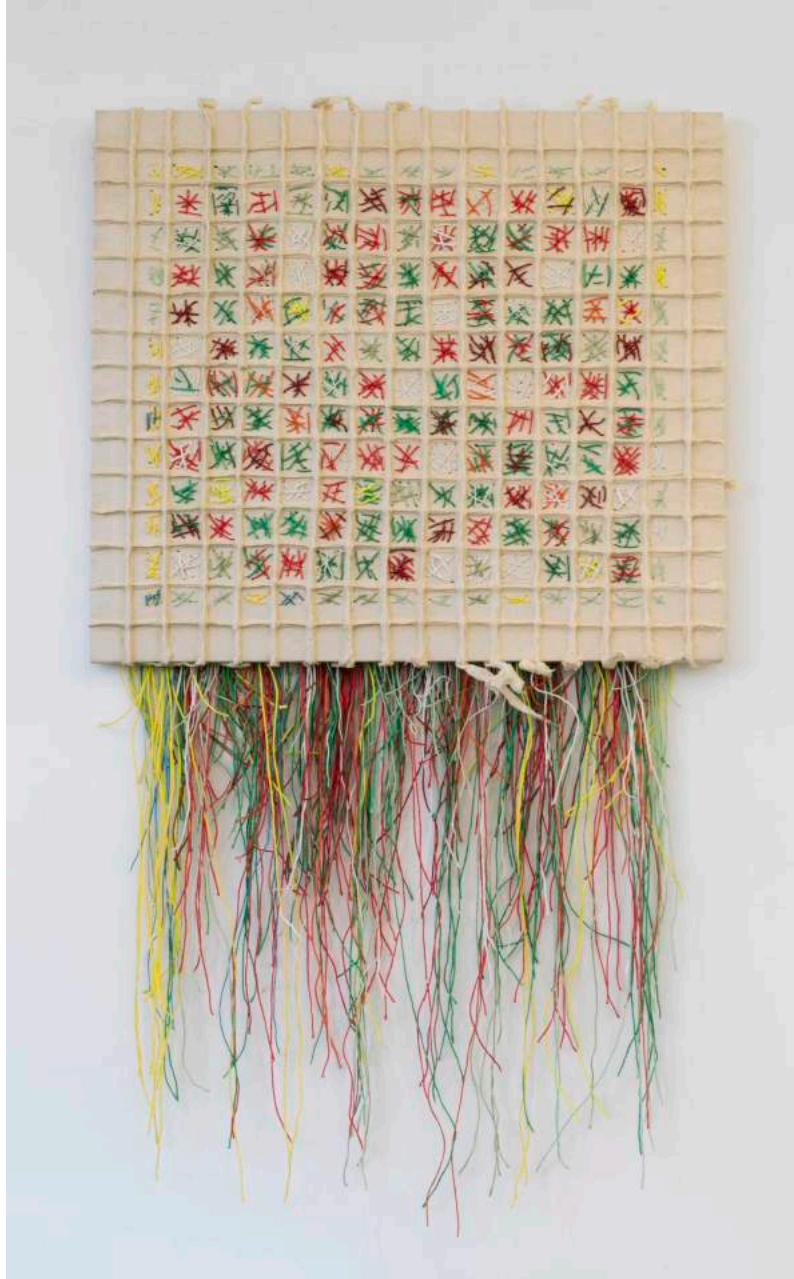
Lavender Lion, 2016
Acrylic and acrylic mediums
on canvas
77.5 x 83 in

Thomas Erben Gallery



Installation view: east and south wall

Thomas Erben Gallery



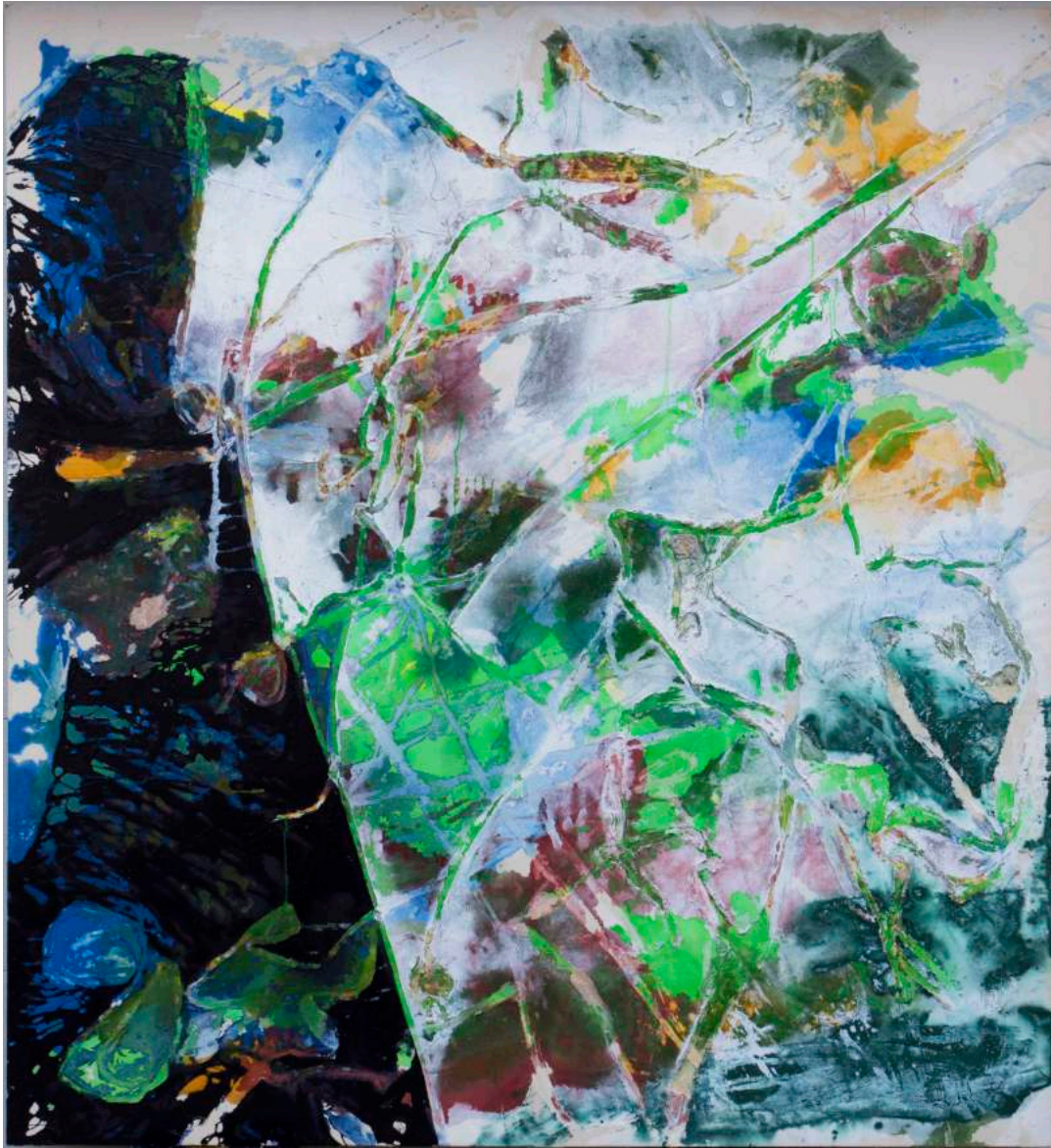
Hägar, 2017
Painted string and
cheesecloth on canvas
31 x 35 in

Thomas Erben Gallery



Autumn Andrew, 2016
Collage, dyed cheesecloth,
muslin, acrylic mediums on
linen panel mounted on
plywood base
panel: 81.5 x 36 in.
base: 38 x 23 in

Thomas Erben Gallery



Magdalena Lane, 2016
Acrylic and acrylic mediums
on canvas
84.5 x 93 in

Thomas Erben Gallery



Cold Busy Street, 1984
Oil on canvas
39.5 x 36.5 in

Thomas Erben Gallery



Installation view: north wall

Thomas Erben Gallery



Mountain Passengers, 2017
Collage, dyed cheesecloth,
muslin, and acrylic mediums
on linen mounted on
plywood base
panel: 81.5 x 36 in.
base: 38 x 23 in.

Thomas Erben Gallery



Installation view: west wall

Thomas Erben Gallery



309, 2016
Acrylic and acrylic mediums
on canvas
79 x 83 in

Thomas Erben Gallery



Passengers 2016
Collage, dyed cheesecloth,
muslin, acrylic mediums on
linen panel mounted on
plywood base
panel: 81.5 x 36 in.
base: 38 x 32 in

Thomas Erben Gallery



Autumn Andrew, 1997
Latex enamel on canvas
90 x 60 in.